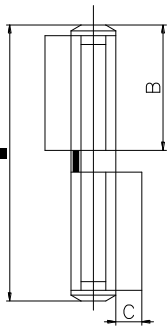
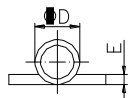


## Панта Estebro® за заваряване кръгла двукрила, дясна с лагер 25x150x5 мм, 508



Cod	Dimens.	A	B	C	∅D	E		
503	20x120x4 Izda Esquerda-Left- Gauche	120	56	16	20	4	30	10,25
504	20x120x4 Dcha Direita- Right-Droite	120	56	16	20	4	30	10,25
505	20x150x4 Izda Esquerda-Left- Gauche	144	68	28	20	4	12	5,65
506	20x150x4 Dcha Direita- Right-Droite	144	68	28	20	4	12	5,65
507	25x150x5 Izda Esquerda-Left- Gauche	154	72	28	25	5	8	5,60
508	25x150x5 Dcha Direita- Right-Droite	154	72	28	25	5	8	5,60

## **Flag hinge with axial bearing**

**Family:** Flag hinge

**Material:** DD11 steel

**Finish:** Zinc-plated

**Maximum weight supported:** According to study

**Description:** Component which is installed on a metallic swing door to allow its opening and closing. The axial bearing installed between both bodies softens the turn maneuver. It has a fixed cap on each end which blocks the axle and prevents it from rusting. For the installation: the lower part is welded to the frame, that is why it is necessary to design it with different hands (right/left) depending on the turn direction of the door.

Продукт: [Панта Estebro® за заваряване кръгла двукрила, дясна с лагер 25x150x5 мм, 508](#)

Категория: [Панти за заваряване](#)

Бранд: [Estebro®](#)

Категория бранд: [Панта Estebro®](#)

Ташев-Галвинг ООД  
www.tashev-galving.com